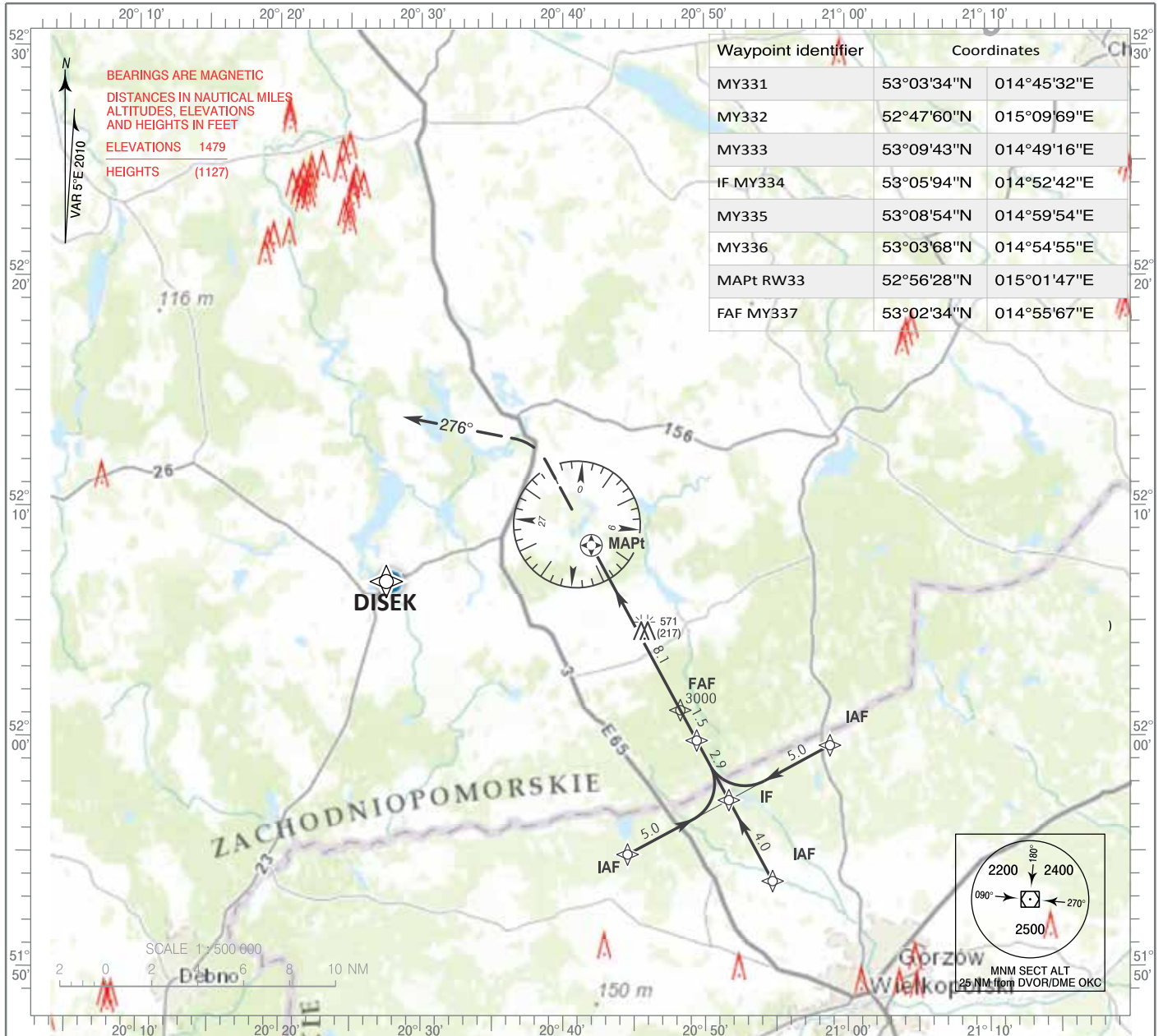


**INSTRUMENT
APPROACH
CHART**

AERODROME ELEV 200 ft
THR RWY 15 ELEV 200 ft
HEIGHTS RELATED TO THR RWY 15

ŁĄDOWISKO MYŚLIBÓRZ-GIŻYN EPMY

**RWY33 RNAV (GNSS)
(CAT A/B/C/D)**

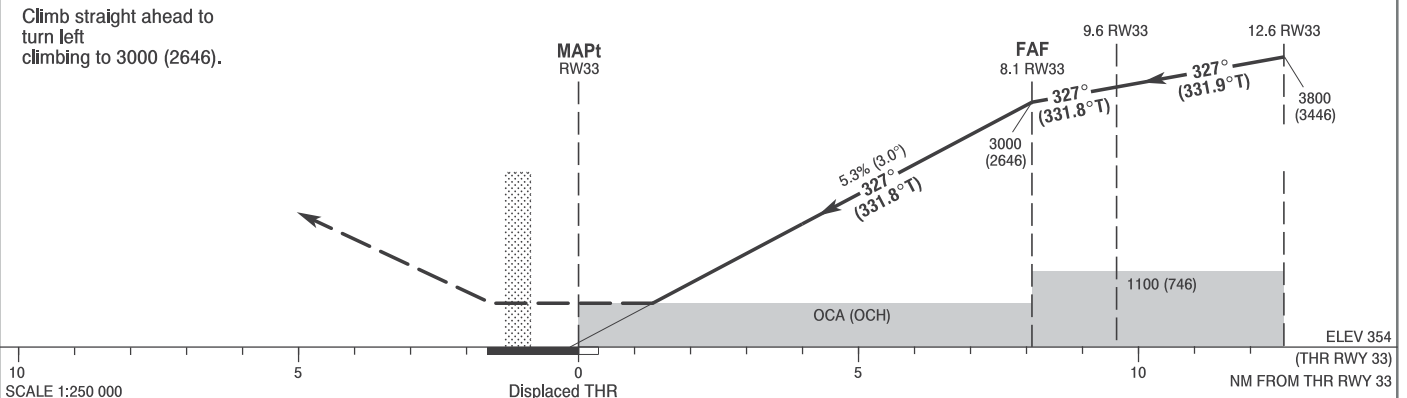


MISSED APPROACH

Climb straight ahead to turn left climbing to 3000 (2646).

TRANSITION ALTITUDE 6500

IF



OCA (OCH)					Distance FAF - MAPt 8.1 NM							
Cat. of ACFT	A	B	C	D	Speed	kt	80	100	120	140	160	
Straight - in	LNAV	820 (466)	820 (466)	820 (466)	820 (466)	Time	min : s	6:04	4:52	4:03	3:28	3:02
						Rate of descent	ft / min	430	540	640	750	850
						Final approach distance/altitude (height)						
Circling (OCH AAL)*	820 (458)	860 (498)	970 (608)	1060 (698)	Distance		8	6	4	2		
					Altitude (height)		2960 (2606)	2320 (1966)	1690 (1336)	1050 (696)		

*For circling restrictions see overleaf